

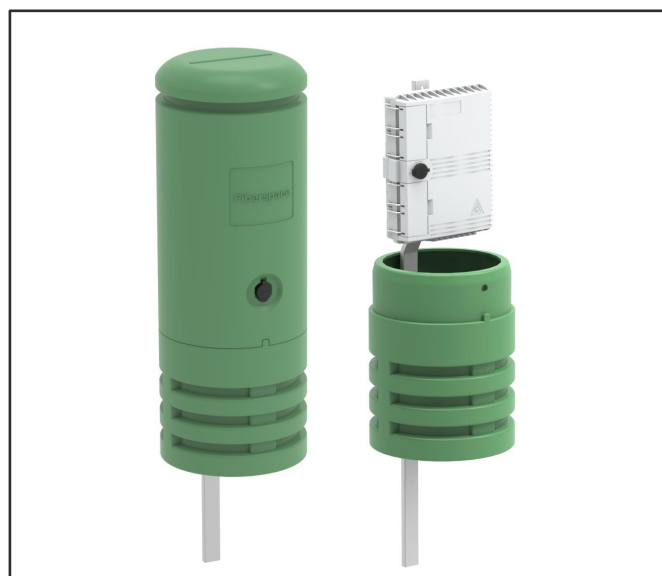
838×Φ290mm Dome Telecom pedestal

DESCRIPTION

The telecommunication pedestal provides protection for distribution equipment in the broadband communications and telephone industries. These pedestals are used for splicing, terminating, and distributing fiber, copper, and CATV. These telecommunication pedestals are semi-buried aboveground housings for different distribution equipment such as fiber management panels, taps, couplers, splitters, and splice cases. The communication pedestal provides fixed-count or preferred-count terminations.

FEATURES

- Anti-UV (Ultraviolet)
- Integrated with splice cassette
- It is applicable for ground-mounted, outdoor
- Durable HDPE dome housing offers excellent protection and long lifespan
- Stainless steel mounting bracket provides perfect anti-rust and anti-corrosion
- Protection grade: IP65

**APPLICATIONS**

- FTTH Access Network → Telecommunication Network → CATV Networks
 → Data Communications Network → Local Area Networks → Ground-mounted

SPECIFICATIONS

Parameters	Values
Size(mm)	838×Φ290
Material	PE
Color	Green

ORDERING INFORMATION

Description	Reference