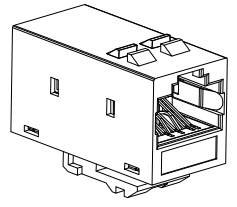


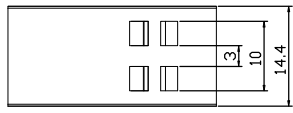
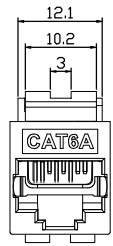
1 2 3 4 5 6 7

REV	DATE	MODIFICATION	DRAWN
	25/10/2021		

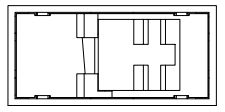
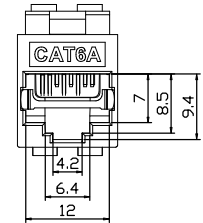
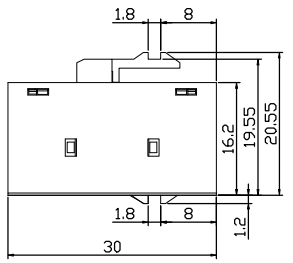
A



B





C



Technical Requirements:

- Housing Material: PC
- Metal Material: Zinc Alloy
- IDC Contact Blades: Phosphor bronze, Tin-plated
- PIN: Phosphor bronze, gold-plated
- PCB Material: FR-4
- PIN Contact Mating Cycles: >750 cycles

D

X.±0.3	X.*±		
.X±0.2	.X*±		
.XX±0.1	.XX*±	QTY	DWG NO. LSKJ04-C6A
.XXX±0.05	.XXX*±	TITLE CAT6A Shielded inline coupler	
MATERIAL	FINISHING	DRAWN	
APPROVAL	CHECKED	SCALE 1/1	SHEET 1/1
		PROJ. 	REV 1

1 2 3 4 5 6 7 A4